



**Smithfield**

All Rangeline Hot Dogs are made fresh from top-quality ingredients and hardwood-smoked to give these American classics a rich, smokehouse flavor.

**All Beef and Pork & Beef Hot Dogs**

**Facts/Features**

- Only tender USDA-inspected cuts of beef and pork
- Smoked with real hickory smoke
- Variety of sizes
- Exact sizing
- No MSG
- Roller grillable

**Benefits**

- Firm bite and better texture
- Rich smokehouse flavor
- Variety of uses, from appetizers to dinner franks
- Reliable portion control
- No artificial aftertaste
- Will not char/burn on grill; easy cleanup

**All Meat Hot Dogs (Chicken, Pork, & Beef)\***

**Facts/Features**

- Only tender USDA-inspected cuts of beef, chicken, and pork
- Smoked with real hickory smoke
- No MSG

**Benefits**

- Firm bite and better texture at a value price
- Rich smokehouse flavor
- No artificial aftertaste

GTIN	Product Description	Net Wt.	A. F. WENDLING'S Est. 1913 Foodservice	Case Dimension (LxWxH)	Case Cube	TlxHl	CS/ Pallet	Shelf Life
10018687011827	4/1 All Beef Hot Dog (CN)	10 lb.	36749	10.625 x 7.625 x 6.625	0.311	22 x 7	154	365
10018687011834	8/1 All Beef Hot Dog (CN)	10 lb.	36748	10.625 x 7.625 x 6.625	0.311	22 x 7	154	365
10018687011841	8/1 Pork & Beef Hot Dog (CN)	10 lb.		10.625 x 7.625 x 6.625	0.311	22 x 7	154	365
10018687011858*	8/1 Chicken, Pork, & Beef Hot Dog (CN)	10 lb.		10.625 x 7.625 x 6.438	0.302	22 x 9	198	365

# FULLY-COOKED SAUSAGE



**Smithfield**

No need to compromise on quality, flavor or consistency when you serve Rangeline Fully Cooked Sausage. Made from superior cuts of lean pork and 100% natural spices, this easy-to-prepare sausage delivers a firm bite with authentic Rangeline flavor.

**Facts/Features**

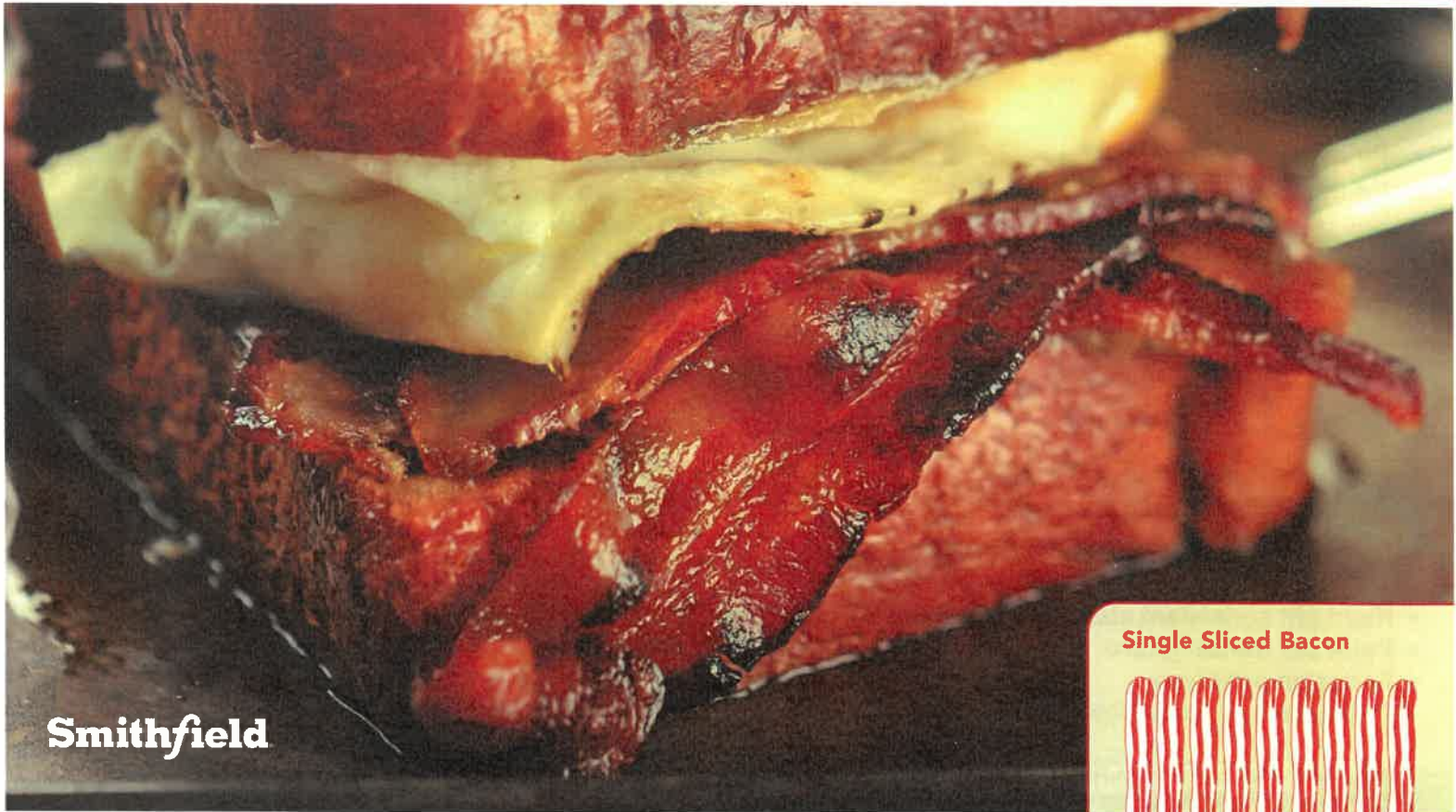
- Fully cooked
- USDA-inspected cuts of lean pork
- Exact pieces per case
- Up to 240 days shelf life
- Multiple sizes available
- Individual, quick-frozen (IQF)
- No MSG, no hormones, no artificial color or flavor
- Child Nutrition (CN) labeled

**Benefits**

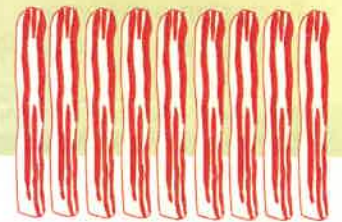
- No shrinkage, less waste, quick preparation
- Firm bite, superior texture and authentic flavor
- Reliable portion control
- Extended freshness
- Versatility of usage
- Fresher final product
- Clean label
- Great for schools and accounts that desire CN

GTIN	Product Description	Net Wt.	A. F. WENDLING'S Foodservice	Case Dimension (LxWxH)	Case Cube	TlxHl	CS/Pallet	Shelf Life
10018687009619	Fully Cooked Sausage Patty, 1.5 oz, 10 lb, Frozen	10 lb.	35258	16 x 10 x 6	0.556	12 x 12	144	240
10018687009626	Fully Cooked Sausage Patty, 2 oz, 10 lb, Frozen	10 lb.	35257	16 x 10 x 6	0.556	12 x 12	144	240
10018687009633	Fully Cooked Skinless Sausage Link, 20/1 lb, 10 lb, Frozen	10 lb.	35259	15.875 x 9.875 x 5.5	0.449	12 x 12	144	240

# READY-TO-COOK BACON



### Single Sliced Bacon



Layout-style bacon on parchment paper for ease of preparation

All Rangeline Bacon is made fresh from top-quality pork bellies, cured with a special cure, and hardwood-smoked for true bacon flavor.

#### Facts/Features

- Natural hickory and applewood smoked
- 1-PC box
- No liquid smoke; no MSG
- Made from fresh pork bellies
- Guaranteed slice count
- Poly-lined boxes or gas-flushed (GF) packaging

#### Benefits

- True country bacon flavor
- Reduced chance of bacon crushing
- No artificial ingredients; no aftertaste
- No frozen bellies
- Portion control; greater profit
- Minimizes freezer burn

GTIN	Product Description	Net Wt	A. F. WENDLING'S Est. 1913 Foodservice	Case Dimension (LxWxH)	Case Cube	TlxHl	CS/ Pallet	Shelf Life
10018687009572	Bacon 18/22 Single Sliced Hickory Smoked Frozen	15 lb.		19.875 x 11.375 x 4.25	0.556	8 x 12	96	90
10018687009589	Bacon 14/18 Single Sliced Hickory Smoked Frozen	15 lb.	<b>35235</b>	19.375 x 11.375 x 4.25	0.542	8 x 12	96	90
10018687009596	Bacon 18/22 Single Sliced Applewood Smoked GF Frozen	15 lb.	<b>34575</b>	19.875 x 11.375 x 4.25	0.556	8 x 12	96	270
10018687009602	Bacon 14/18 Single Sliced Applewood Smoked GF Frozen	15 lb.		19.875 x 11.375 x 4.25	0.556	8 x 12	96	270

## BACON

- Always cut fresh or refrigerated product  
- NOT FROZEN
- Open box to allow customer to smell natural smoke aroma
- Point out freezer guard
- Point out slice count per sheet
- Weigh a couple of slices
- Point out no box is perfect
- Focus on positives
- Cook product and allow customer to taste

## BREAKFAST SAUSAGE

- Always cut fresh or refrigerated product  
- NOT FROZEN
- Highlight consistent size of links and patties
- Point out freezer guard
- Focus on positives
- Cook product, and allow customer to taste

### READY TO EAT PRODUCT

- Saves time and labor to create any recipe
- Uses 100% natural spices and flavorings
- Individually quick-frozen for fresher product, with 240-day shelf life

## HOT DOGS (COLD FILL)

- Compare labels
- Always demo fresh or refrigerated product  
- NOT FROZEN
- Highlight that we add natural smoking versus smoke flavoring
- Show that we include informational callouts indicating Gluten-Free, MSG-Free Reduced Sodium, Naturally Smoked and other facts to alert the consumer, while theirs may not
- Explain that while our product is always fresh, theirs may be fresh/refrigerated or frozen
- Cook product, and allow customer to taste

### What is Bacon?

Bacon comes from the pork belly cut of the lean, butcher-type hogs we raise on our company-owned and contracted farms around the country.

### What makes Smithfield/Rangeline bacon different?

We oversee every step in the process of our livestock, from their diet and health regimens to their living quarters at our stockyards.

Our bacon is smoked with real wood for true, natural flavor and cured with a proprietary pickle.

### What Makes Smithfield/Rangeline Breakfast Sausage Special?

We use only lean, butcher-type hogs for our sausage products. We oversee every step in the process of our livestock, from their diet and health regimens to their living quarters at our stockyards. The vast majority are raised on our owned and contracted farms across the United States.

All our breakfast sausage is smoked with real wood for true, natural flavor, using primarily hickory, applewood or cherrywood.

### What Makes Smithfield/Rangeline Hot Dogs Special?

- We use only 100% USDA-approved raw materials for freshness and uncompromising quality.
- All our franks are smoked with natural hardwoods for unequalled flavor and color.
- We use no fillers or extenders in our gourmet all-beef franks.
- There is no MSG in any of our Smithfield branded franks.
- Our franks are skinless for a better bite and made to exact sizes for ease of portion control
- Our franks are vacuum-packed to guarantee fresh & flavorful product.
- All our skinless dogs are roller grill-ready.